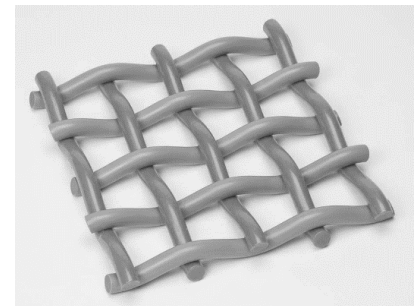
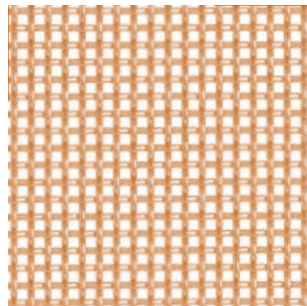




# SPECIAL OFFER

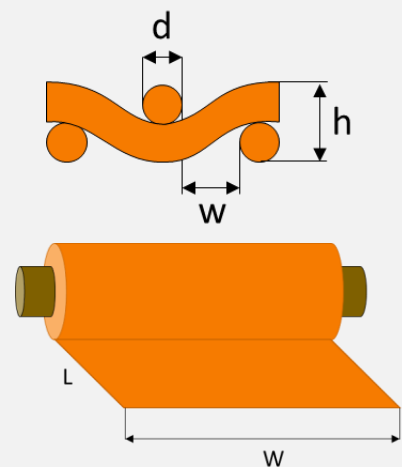
## Phosphor Bronze Woven Wire Mesh Material

- Woven Wire Mesh made of round Phosphor Bronze wire with rectangular openings
- Manufactured to aerospace standards and specification
- CoC provided
- **Rolls of 30 linear meter**



### Technical Data

Material	<b>Phosphor Bronze</b>
Alloy-Code / Standards	DIN: CW452K DE: 2.1020 EN: CuSn6 UNS: C 51900
Construction	Plain Weave Square Mesh
Wire diameter	d= <b>0.063 mm</b> / 63 $\mu$ m / 0.0025 " / 2.5 mil
Width of opening	w= <b>0.090 mm</b> / 90 $\mu$ m / 0.0035 " / 3.5 mil
Open area	<b>34.6%</b>
Total thickness	h= <b>0.126 mm</b> / 126 $\mu$ m / 0.00496 " / 4.96 mil
Areal weight	<b>358 gsm</b> / 0.073 psf
Packaging	Roll width W = <b>1750 mm</b> / 68.9" / 5.74' Roll length L ~ <b>30 m</b> / 98.4' Roll area A ~ <b>53 sqm</b> / 63.4 sqyd / 570.5 sqft
Art.No.	3315 (remaining 7 rolls)

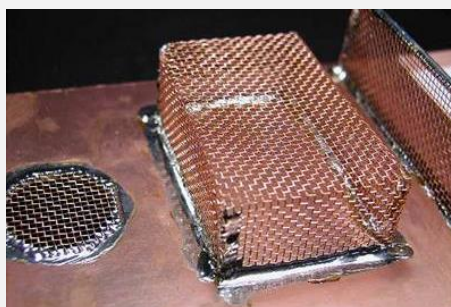


### Applications

#### Lightning Strike Protection



#### Electromagnetic Shielding (EMI)



#### Filtering

